

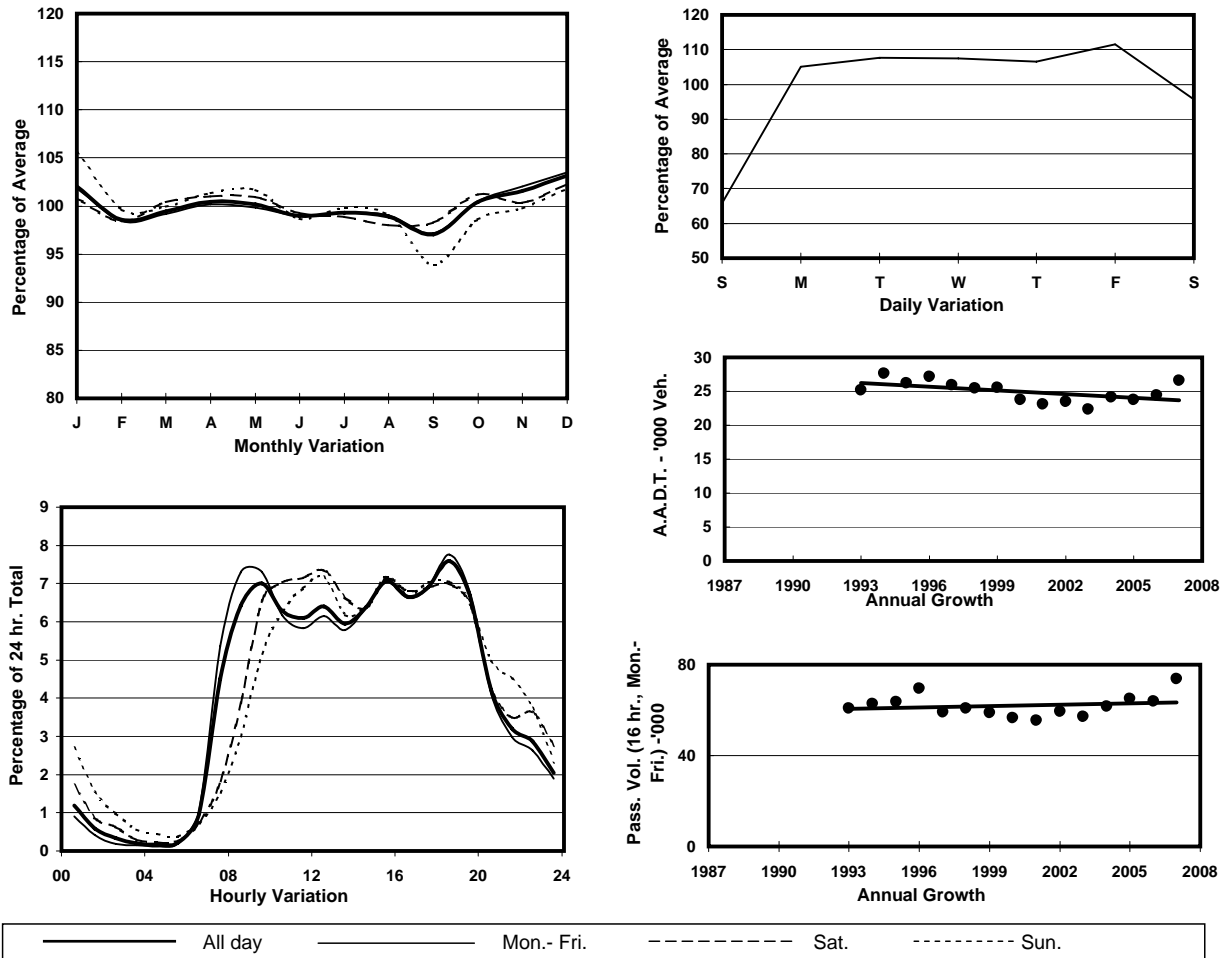
YEAR 2007

Location Screenline H-H(Boundary Between the Peak and the rest of Hong Kong Island)

Stations on Cordon/Screenline

2203 and 2205

1. TRAFFIC FLOW VARIATION AND GROWTH



2. TRAFFIC CHARACTERISTICS (BY DIRECTION)

Parameter	All - Day	Mon. - Fri.	Sat.	Sun.
UP BOUND				
A.A.D.T.	13350	14600	13160	9040
R 12 / 24 - %	76.2	77.4	74.1	69.7
R 16 / 24 - %	93.8	94.6	92.1	89.9
AM Peak Hour	0900-1000	0900-1000	0900-1000	0900-1000
One-way flow at AM peak hour	930	1060	860	500
T - % (AM)	-	4.8	-	-
PM Peak Hour	1800-1900	1800-1900	1700-1800	1800-1900
One-way flow at PM peak hour	1040	1180	950	610
T - % (PM)	-	7.5	-	-
Prop.of commercial vehicles - 16 hr.	-	5.8	-	-
DOWN BOUND				
A.A.D.T.	13260	14600	12780	8830
R 12 / 24 - %	78.4	79.8	75.2	71.5
R 16 / 24 - %	94.8	95.6	92.9	90.7
AM Peak Hour	0900-1000	0800-0900	0900-1000	0900-1000
One-way flow at AM peak hour	930	1080	840	420
T - % (AM)	-	7.3	-	-
PM Peak Hour	1800-1900	1800-1900	1800-1900	1700-1800
One-way flow at PM peak hour	980	1080	890	650
T - % (PM)	-	7.1	-	-
Prop.of commercial vehicles - 16 hr.	-	6.4	-	-

3. OTHER INFORMATION AND COMMENT

4. Vehicle classification and occupancy - Monday to Friday

Time		Class of vehicle									
		Motor	Private	Taxi	Private	PLB	Goods veh.		Non	Fr. Bus	
		Cycle	Car		LB		Light	M & H	Fr. Bus	SD	DD
0700-0800	Pro	2.9	53.2	30.1	1.9	2.8	1.6	0.7	6.1	0.0	0.7
	Ocp	1.0	2.0	1.7	3.7	12.1	2.0	1.0	7.2	0.0	36.1
0800-0900	Pro	1.2	61.5	22.1	1.8	2.8	3.3	0.5	6.5	0.0	0.4
	Ocp	1.2	1.7	2.1	6.1	11.2	2.8	2.0	10.4	0.0	31.0
0900-1000	Pro	1.0	61.3	24.5	0.7	1.3	7.2	0.9	2.9	0.0	0.4
	Ocp	1.2	1.6	1.8	1.2	12.2	1.8	1.2	8.8	0.0	25.4
1000-1100	Pro	2.0	54.1	24.6	0.2	1.1	10.0	2.4	5.0	0.0	0.5
	Ocp	1.1	1.5	1.7	2.0	7.2	1.7	1.5	13.1	0.0	11.3
1100-1200	Pro	1.8	52.3	21.0	2.1	1.1	15.1	1.4	4.5	0.0	0.6
	Ocp	1.2	1.6	1.7	2.6	8.6	1.8	1.8	14.3	0.0	15.2
1200-1300	Pro	1.9	56.0	20.3	2.2	0.8	13.1	1.4	3.7	0.0	0.5
	Ocp	1.2	1.6	2.0	4.4	11.8	1.7	2.2	13.3	0.0	21.6
1300-1400	Pro	0.9	48.6	30.6	0.5	1.2	11.5	1.9	4.2	0.0	0.6
	Ocp	1.0	1.5	1.7	4.5	12.2	2.0	1.4	17.8	0.0	22.6
1400-1500	Pro	1.3	49.1	29.4	0.8	1.5	12.5	1.1	3.7	0.0	0.6
	Ocp	1.0	1.6	2.0	4.8	9.8	1.7	2.0	18.0	0.0	18.4
1500-1600	Pro	1.6	53.7	28.6	1.5	1.0	8.9	0.8	3.4	0.0	0.4
	Ocp	1.1	1.8	1.9	7.6	11.4	1.8	1.2	11.5	0.0	21.2
1600-1700	Pro	1.5	51.2	29.8	1.0	2.0	9.3	1.2	3.7	0.0	0.3
	Ocp	1.0	1.8	2.0	3.8	10.4	2.1	1.7	15.2	0.0	36.1
1700-1800	Pro	2.4	52.1	31.5	0.4	1.8	6.9	0.6	3.7	0.0	0.5
	Ocp	1.6	1.8	2.3	1.0	9.0	2.8	1.3	17.5	0.0	37.1
1800-1900 Peak Hour	Pro	0.9	59.5	27.2	0.2	1.1	3.7	0.0	7.0	0.0	0.3
	Ocp	1.2	1.7	2.3	2.0	16.5	1.5	0.0	22.3	0.0	42.9
1900-2000	Pro	1.6	60.4	29.8	0.0	0.8	1.6	0.2	5.2	0.0	0.4
	Ocp	1.1	1.6	1.9	0.0	16.5	1.8	1.0	17.3	0.0	27.8
2000-2100	Pro	0.0	53.9	36.1	0.0	1.8	0.7	0.0	6.6	0.0	0.9
	Ocp	0.0	1.5	2.0	0.0	13.0	1.5	0.0	15.6	0.0	22.9
2100-2200	Pro	0.9	50.3	40.6	0.0	0.9	1.4	0.0	5.0	0.0	0.8
	Ocp	1.5	1.7	2.2	0.0	9.5	1.7	0.0	17.2	0.0	14.3
2200-2300	Pro	0.0	54.6	36.3	0.0	1.4	1.8	0.0	4.7	0.0	1.2
	Ocp	0.0	1.6	2.1	0.0	8.7	1.3	0.0	12.5	0.0	17.0
16 hours	Pro	1.5	54.9	28.0	0.9	1.5	7.2	0.9	4.7	0.0	0.5
	Ocp	1.2	1.7	2.0	4.3	11.3	1.9	1.6	14.8	0.0	24.7

Legend

- Pro.** Proportion of vehicles in % (Sum may not add up to 100% due to figure rounding)
- Ocp.** Average occupancy of vehicles
- M & H** Medium and Heavy